

# Essential immigration information and living in the UK

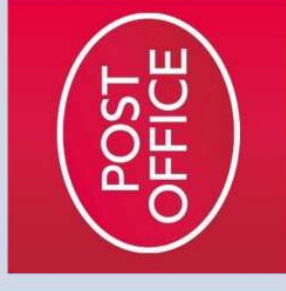


WORK



i



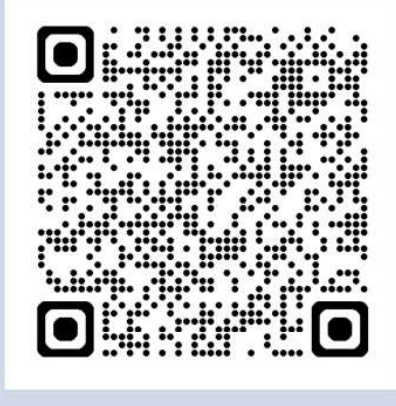


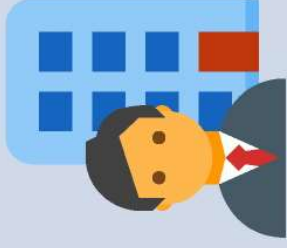
- Collect BRP
- Check permission is correct

Error? See: <https://www.qmul.ac.uk/welfare/visas-international-advice/student-visas/received-student-visa/>

**NB - BRPs not valid beyond 31 December 2024!  
Create an UKVI account to access your eVisa ASAP!**

- Keep BRP safe at home





**Prepare for  
the  
Graduate  
Route**

**Working  
after  
studies**

**Working  
during  
studies**

## Permitted work



Degree level & above **20 hrs/week** term-time

Full-time during **official vacations** to be agreed with your supervisor normally for **six weeks (30 working days) a year**.

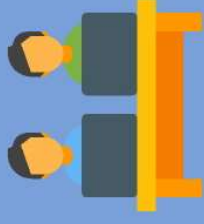
Not permitted -including permanent full-time role, self-employed, sportsperson, entertainer

[qmul.ac.uk/welfare/visas-international-advice/working/](http://qmul.ac.uk/welfare/visas-international-advice/working/)

[does-my-immigration-permission-allow-work/](http://qmul.ac.uk/welfare/money-and-practical-advice/does-my-immigration-permission-allow-work/)

[qmul.ac.uk/welfare/money-and-practical-advice/managing-money/working/](http://qmul.ac.uk/welfare/money-and-practical-advice/managing-money/working/)

## Working after studies



Workshops Sem A

<https://www.qmul.ac.uk/careers/events/upcoming-events-/international-student-events/>

[qmul.ac.uk/welfare/visas-international-advice/working/working-after-studies-visa/](https://www.qmul.ac.uk/welfare/visas-international-advice/working/working-after-studies-visa/)





## Preparing for the Graduate Route

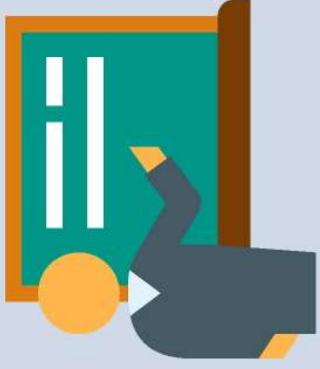
Check visa is correct, request amendment ASAP if not

Provide proof of immigration status and date of entry to the UK to the Immigration Compliance Team

Failure to complete on time may impact on eligibility for the Graduate Route

Read our blog post: [qmulintadvice.wordpress.com/2023/01/13/planning-to-apply-for-the-graduate-route-post-study-work-visa/](https://qmulintadvice.wordpress.com/2023/01/13/planning-to-apply-for-the-graduate-route-post-study-work-visa/)

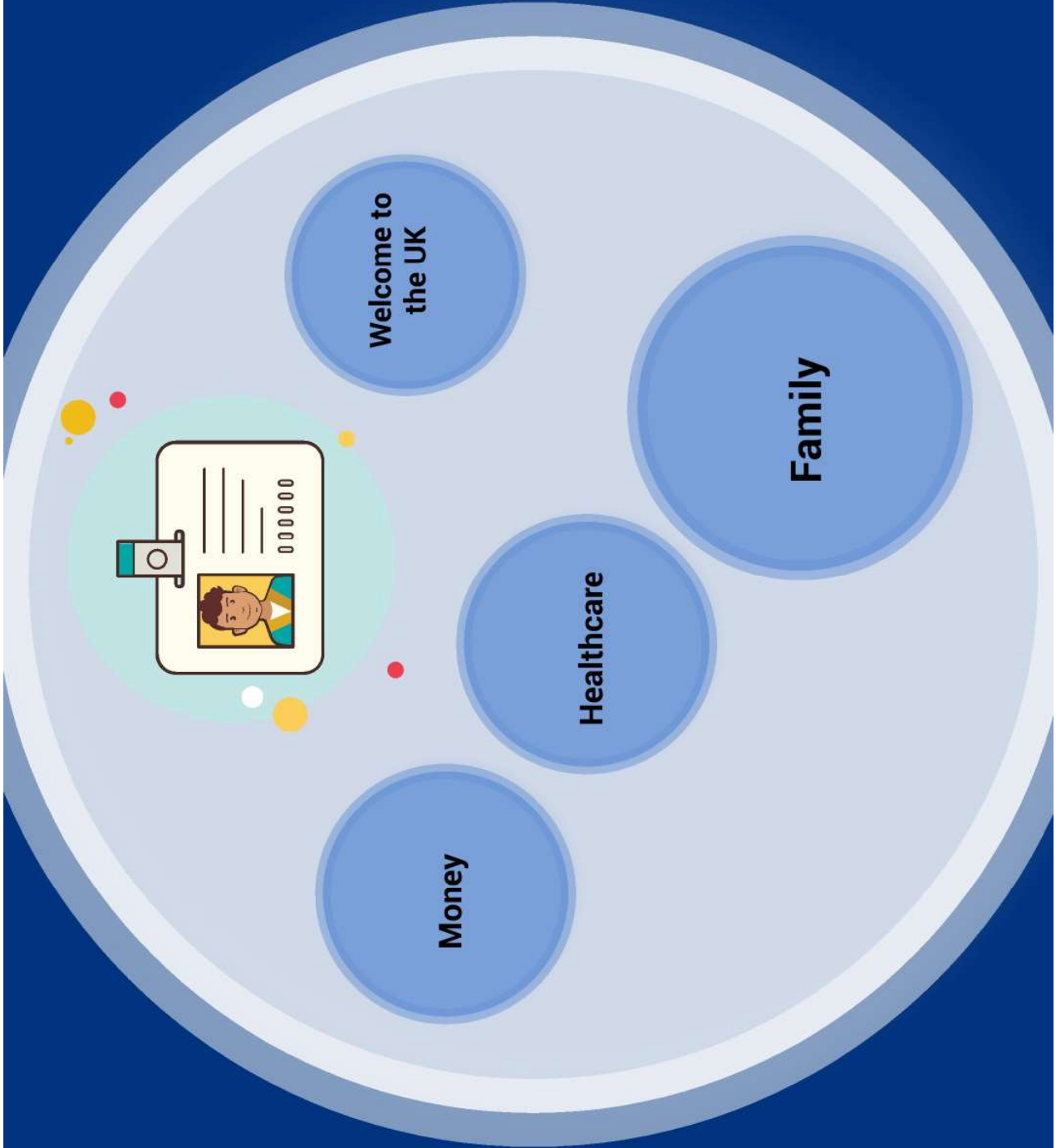




Engage on  
course, inform  
School if unable  
to participate

Report  
personal  
changes

Visa linked to  
course, changes  
could have visa  
implications e.g.  
**ATAS**

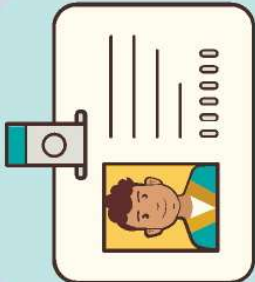


**Welcome to  
the UK**

**Family**

**Healthcare**

**Money**





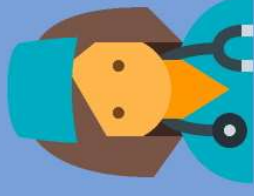
# Money



- Choose & open a bank account in UK
- Banking safety tips
- Be aware of scams
- Financial issues during course
- Plan and manage your personal budget

[qmul.ac.uk/welfare/visas-international-advice/  
international-money/](https://qmul.ac.uk/welfare/visas-international-advice/international-money/)

## Healthcare



- Register with a GP
- Register online with the Student Health Service if you live in postcodes E1, E2, E3 or E14 otherwise local GP [nhs.uk](https://www.nhs.uk)
- More info: [studenthealth.qmul.ac.uk](https://studenthealth.qmul.ac.uk)



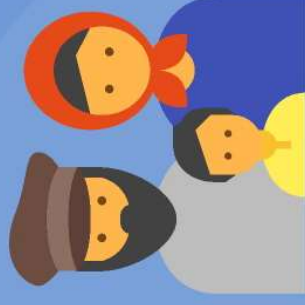
## Welcome to the UK



ISH travel club

[qmul.ac.uk/welfare/visas-international-advice/travel/re-enter/](http://qmul.ac.uk/welfare/visas-international-advice/travel/re-enter/)

# Family



## Information for family members:

Inviting family members to visit: [qmul.ac.uk/welfare/visas-international-advice/do-i-need-a-visa/visitor/](https://qmul.ac.uk/welfare/visas-international-advice/do-i-need-a-visa/visitor/)

Bringing dependants: [qmul.ac.uk/welfare/visas-international-advice/student-visas/dependants/](https://qmul.ac.uk/welfare/visas-international-advice/student-visas/dependants/)



# Advice and Counselling Service

- Free and confidential
- Financial, welfare, legal, emotional or psychological issues



[qmul.ac.uk/welfare/visas-international-advice/](http://qmul.ac.uk/welfare/visas-international-advice/)



[@qmul\\_acs](https://www.instagram.com/qmul_acs)



[@qmul\\_acs](https://twitter.com/qmul_acs)



[qmulintadvice.wordpress.com](http://qmulintadvice.wordpress.com)

