

# Training and development opportunities

Melanie Crisfield

Training Manager – Doctoral College

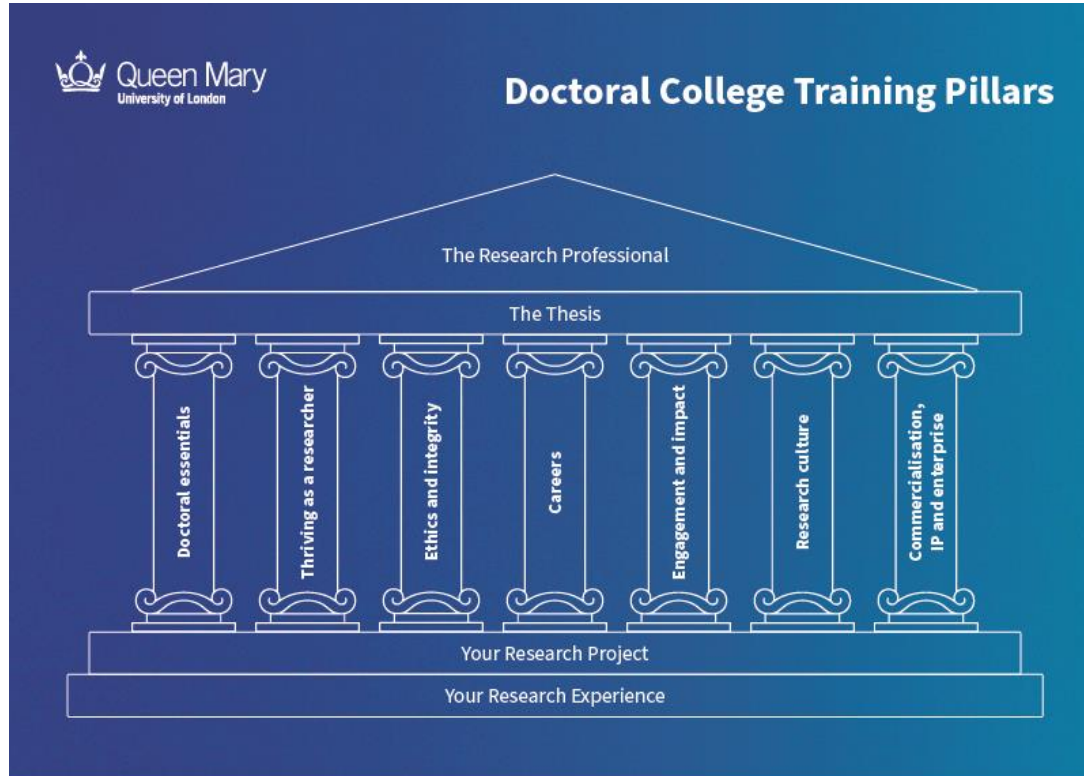
---

# What do we mean by training and development?

- Unlike an undergraduate or master's programme, PGR training typically isn't set or mandatory.
- Your training and development needs will be unique to **you** and your project.
- **You** are in the driver's seat!
  - How do you know what training and development you need?
  - [PGR Roadmap](#)



# Training pillars



# Development Needs Analysis (DNA)

- Our PGR DNA supports you in:
  - Considering your current skills and experience.
  - Planning for your skills development.
- Uses our 7 training pillars.
- You will need different skills development at different times in your doctorate.
- Work with your supervisors to identify your needs and opportunities to develop in those area.
- [Link to DNA](#)

# Where do I find training?

- Queen Mary [CPD Training System](#)
  - Info on [how to use the CPD Training System](#)
- [Doctoral College Training Calendar](#)
- [Bloomsbury Postgraduate Skills Network](#) (BPSN)
- [London Interdisciplinary Social Science](#) (LISS) DTP training
- [University of London School of Advance Study](#)

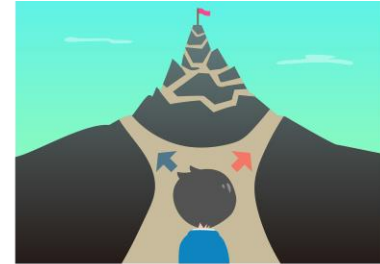


# Skills Points

- PGRs are eligible for the Queen Mary Diploma of Researcher Development (Q-Dip).
- All the training and development you undertake that is not compulsory for your doctorate qualifies for skills points.
  - Compulsory elements: supervision meetings, progression reviews, thesis writing, submission, viva, corrections.
- If you earn 210 skills points before you submit your viva, you will then be awarded the Q-Dip upon completion of your doctorate.

# Recommended for early stage PGRs

- [Creative thinking for researchers](#)
- [Critical thinking for researchers](#)
- [Early Stage Skills Day](#)
- [Getting started with your doctorate](#)
- [Managing your time and workload in a research environment](#)
- [Memory skills for researchers](#)
- [Mendeley it!](#)
- [Project Management Essentials](#) (workbook)
- **[Research Integrity](#) (required before first year review)**
- Research it! ([FMD](#); [S&E](#))
- [Visualise it!](#)
- [Working with your doctoral supervisors](#)



**Thank you**



**Queen Mary**  
**University of London**