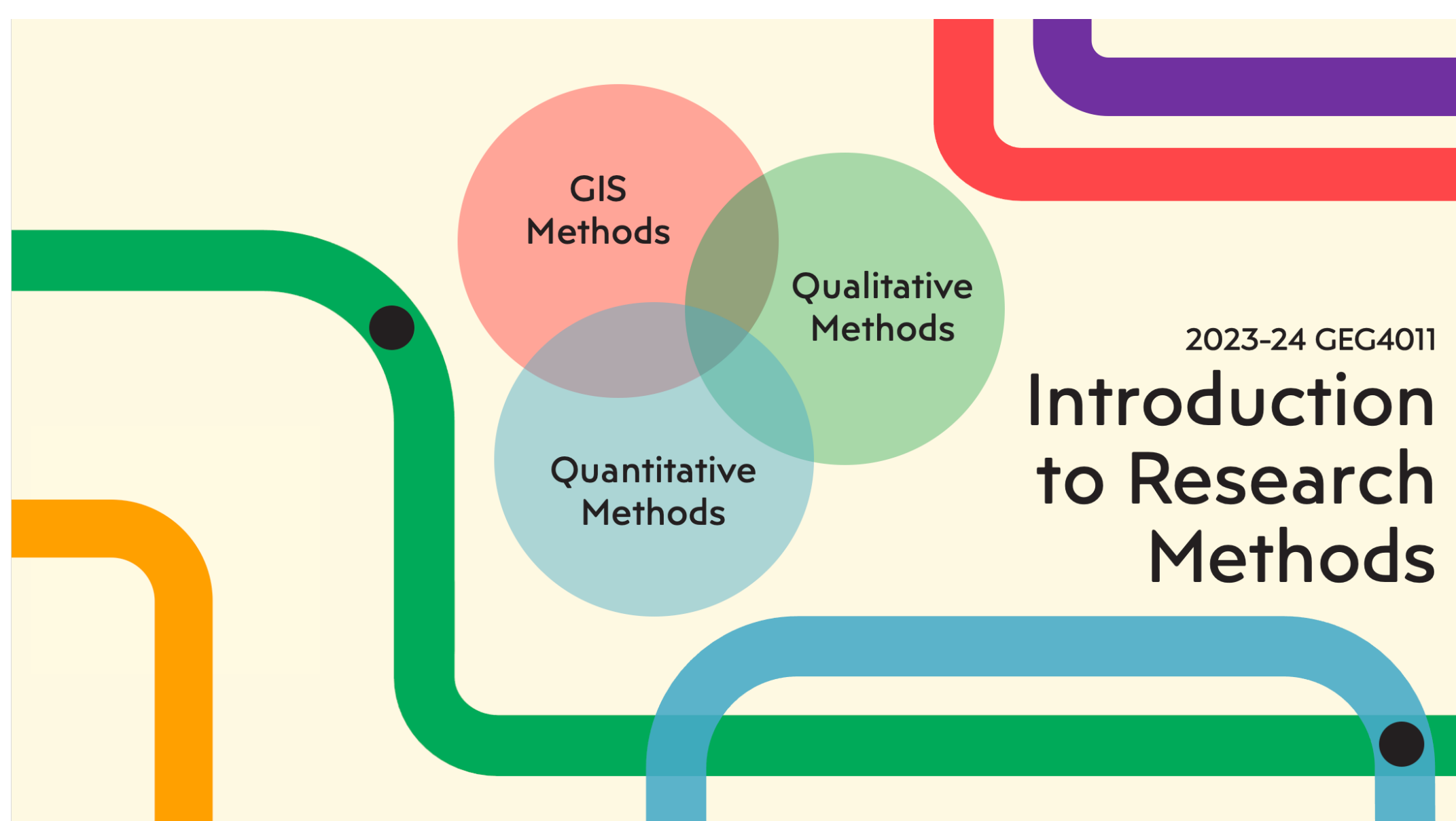


# East London Atlas

Elsa Noterman, Philippa Williams, Alex Henshaw

The East London Atlas is a pedagogical project to develop an active-learning and place-based model of teaching research methods.



## 1 Learning community

Through a year-long research methods module, we are cultivating a research community amongst first year undergraduate students in the School of Geography by providing them with an opportunity to identify and engage with critical geospatial questions in East London.

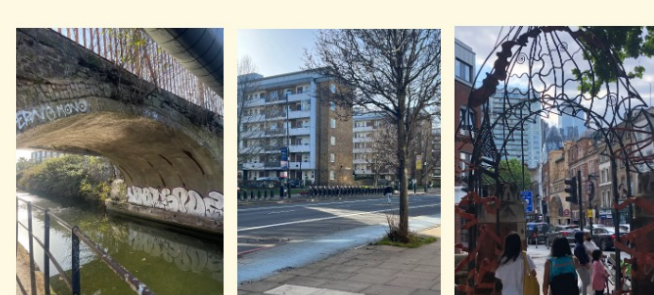


## 2 Pedagogy: hands-on methods training

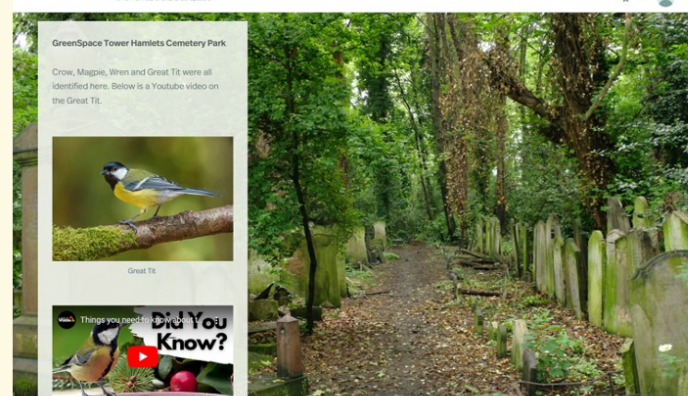
Through weekly practical sessions – in labs, in London and in QM library archives – students have opportunities to practice the geospatial, qualitative and quantitative methods they are learning in the classroom.



Historical materials analysed by students using discourse analysis



Student photos from PhotoVoice exercise



## 3 Assessment: StoryMaps

Over the course of the module, each student is developing a **StoryMap**, a digital map that incorporates text, interactive maps, diagrams and images to tell a research story.

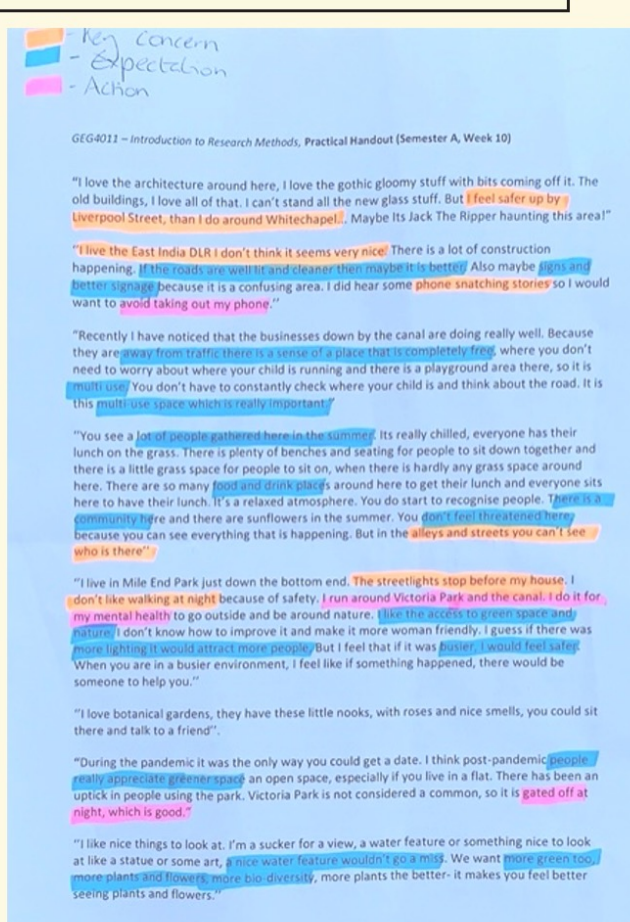
For their StoryMaps, students are applying the methods they are learning in the classroom to develop and answer research questions related to set themes (e.g. housing, health, greening space, etc.) in Tower Hamlets.



## 4 Local partnerships

The project is also fostering community partnerships, including with Tower Hamlets Council, whereby members of the planning department worked with students in the classroom, sharing research data and their experiences of using research skills and StoryMaps in local planning processes. In subsequent years of the module, students will develop StoryMaps related to different themes and areas of East London.

Example of student coding of interview transcripts from Tower Hamlets Council's study: "This is for the Majority: Gender Inclusive Design, Creating a Safe, Inclusive and Restorative Borough" by Public Realm Project Officer Jennie Savage, who visited the class. Students were also able to work with a Planning Officer and the Principal Spatial Data Officer.



## 5 Building an East London Atlas

Together student StoryMaps are forming the basis of a public online **East London Atlas**, which will include an interactive map of the student StoryMaps and a curated set of research resources.

Module assessment thus becomes not only a means of assessing the work of students, but also a public resource and a piece of work students can use when applying for jobs to demonstrate their graduate attributes.

